



September 15, 2025

Oregon Metro's Traffic Count Program: Changes and Adaptations

Bill Stein

Oregon Metro

Modeling Mobility Conference

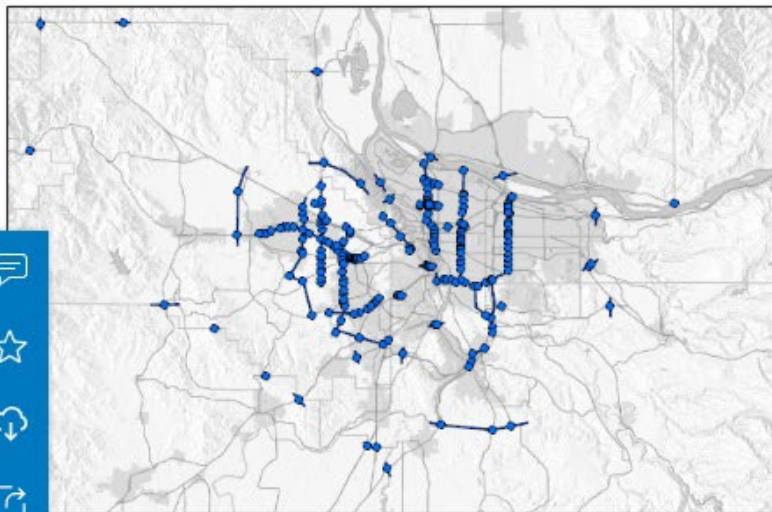
Overview of presentation

- Uses for Metro's counts
- Changes over time to Metro's count program
- Validation of AI counts
- Lessons learned

Uses for Metro's counts

- **Validation of base year transportation models**
 - Cutlines
 - External stations
- **Published on Metro's Regional Land Information System (RLIS)**





Traffic Counts and Classifications

**Oregon Metro RLIS**

Metro

[Download](#)

Summary

Traffic count and classification data collected by Metro in the years 2015, 2017, 2019, 2022, and 2024 and aggregated into a geodatabase. The collection is comprised of a point feature class representing the station location of the counts, a line feature class representing cutlines (either artificial or physical barrier lines that represent major traffic flows along a selected axis), and 2 tables representing traffic counts and vehicle classifications at each station location. Counts are captured in 15 minute increments for a period of 24 hours.

Date of last data update: 2025-04-24

This is official RLIS data.

Contact Person:

Alicia Wood

alicia.wood@oregonmetro.gov

503-813-7561

Details

**Data File**

File Geodatabase

**May 1, 2025 at 10:43:07 AM PDT**

Info Updated

**Annually**

Data Updated: May 1, 2025 at 10:43:07 AM PDT

**August 1, 2024 at 12:00:00 AM PDT**

Published Date

**Public**

Anyone can see this content

**ODbL 1.0 License**

[View license details](#)

**Relevant Area**

History of Metro's count program

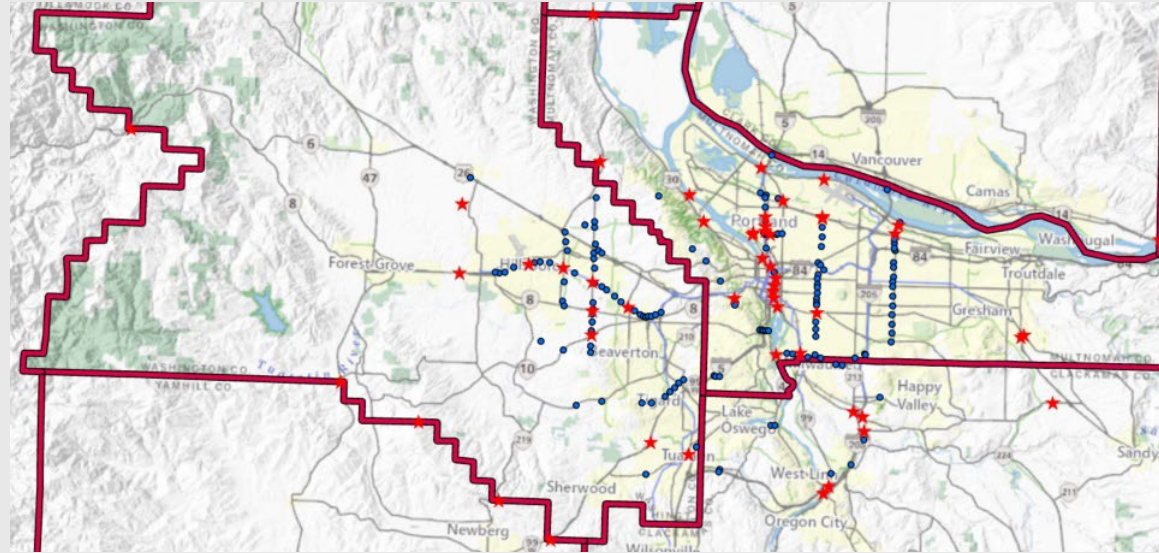
- **Started in 2015**
 - Odd numbered years last decade
 - Skipped 2021
 - Even numbered years this decade
- **In previous count contracts:**
 - Tube counts on arterials
 - Video counts on freeways and bridges (hand-counted)
 - Class counts on freight facilities

What changed in 2024

- AI processing of video for all counts
- 8 vehicle classes rather than the FHWA 13
- Bike counts

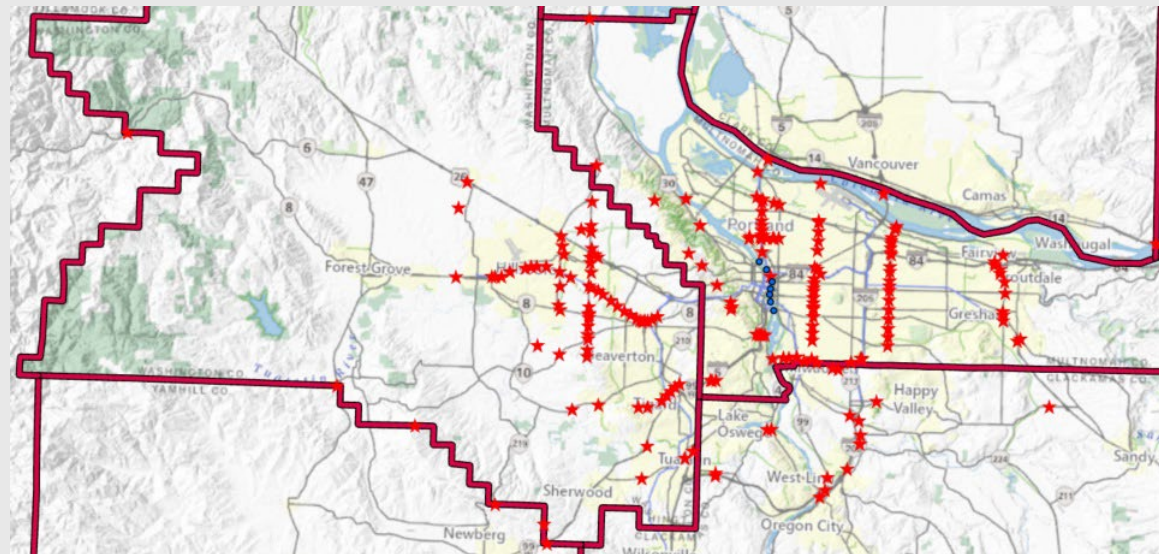
Class count order before/after price change

2022

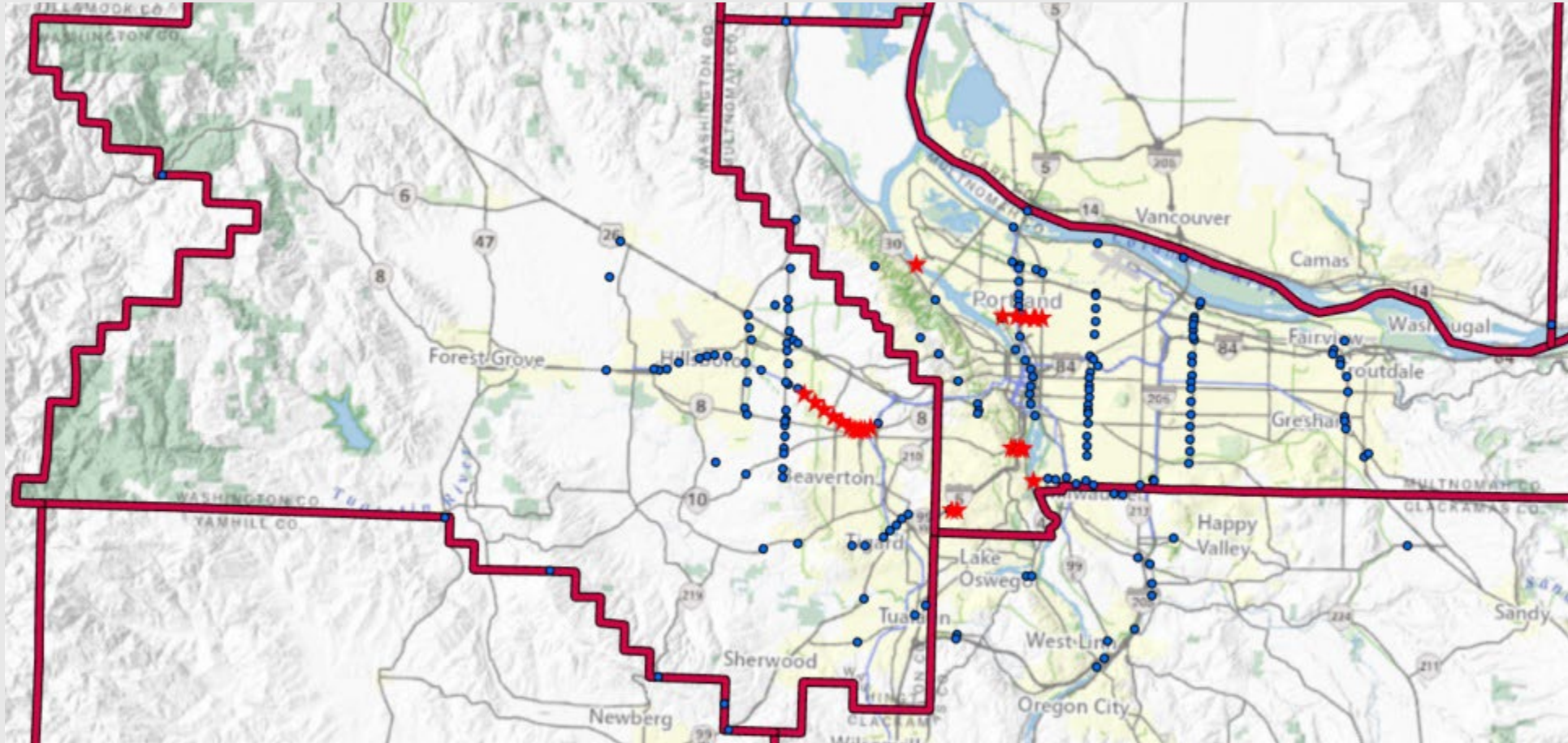


In both plots,
RED star = Class Count,
BLUE dot = Volume Count

2024



Bike counts complemented previously collected bike counts



RED Star = Bike Counts, **BLUE** dot = Other Count Locations

Validation of AI counts

- **We found these oddities in the 2024 counts:**
 - 3 locations at which counts didn't match ATRs
 - 2 locations at which counts didn't match previous counts
 - 2 locations at which counts didn't match data collected by Portal
- **We sought clarity before accepting the 2024 counts**

How we conducted the review

- **Specific time periods we had questions about**
 - Vendor provided all 24 hours at those locations
- **We compared autos, medium trucks, and heavy trucks**

Clackamas County storm on 10/30/2024

Vendor reported that drops on lenses confused the AI

Location	Direction	Time Window	AI Count	Re-Count
I-205 W of Stafford Rd	WB	06:45-06:59	467	831
S Kamrath Rd S of Swansea Ln	NB	08:00-08:59	621	557

Other counts under review

- At half of the requested locations, differences +/- 1% or even 0%
- For the other half, differences ranged from 1.1% to 7.3%
- We accepted all the recounts as our 2024 counts

Permit considerations

- **Multnomah County fee for bridges (2024 and beyond)**
- **ODOT no-fee but 48-hour notice required (2026 and beyond)**
 - Google Street View images of ODOT posts
 - ODOT milepoint numbers of ODOT posts

Lessons learned

- AI allows for more counts, more class counts, more types of counts
- “Trust but verify”: have multiple data sources to check AI counts
 - ATRs, previous counts, local data
- Ask strategically for hand recounts of video for specific locations



Questions?

bill.stein@oregonmetro.gov

<https://tinyurl.com/MetroRlisTrafficCounts>



oregonmetro.gov